

ESS 250 LS

EAGON
이건창호

SYSTEM

ESS 250 LS A type

NOTE.

사용 가능 유리
복층유리 : 24mm, 28mm
삼중유리 : 35mm, 43mm, 47mm
진공유리 : 27.3mm, 31.3mm
열차폐율
복층유리 : 1.606 W/m²K
삼중유리 : 0.980 W/m²K
진공유리 : 0.874 W/m²K

REV.	DESCRIPTION	DATE
△		
△		
△		
△		
△		

CODE NO.

PROJECT TITLE

DRAWING NAME

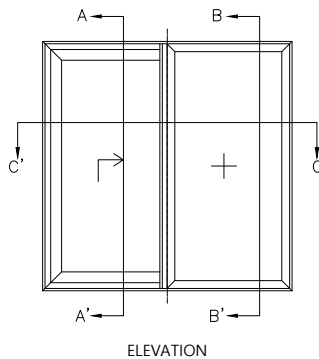
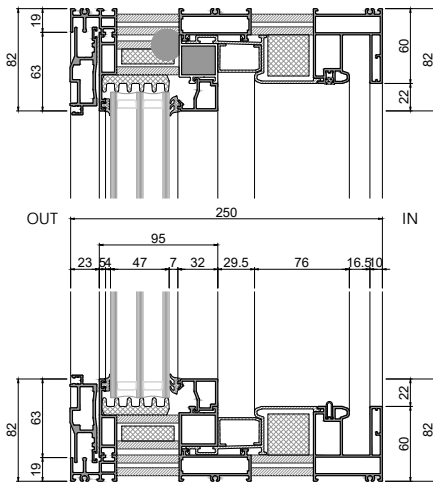
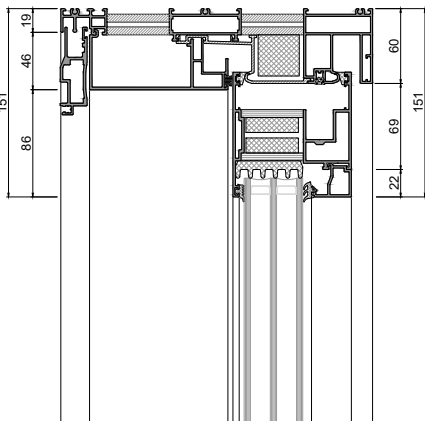
DRAWING BY

CHECKED BY

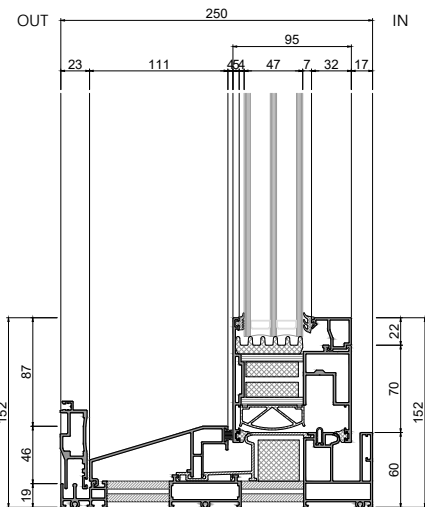
APPROVED BY

FILE NAME

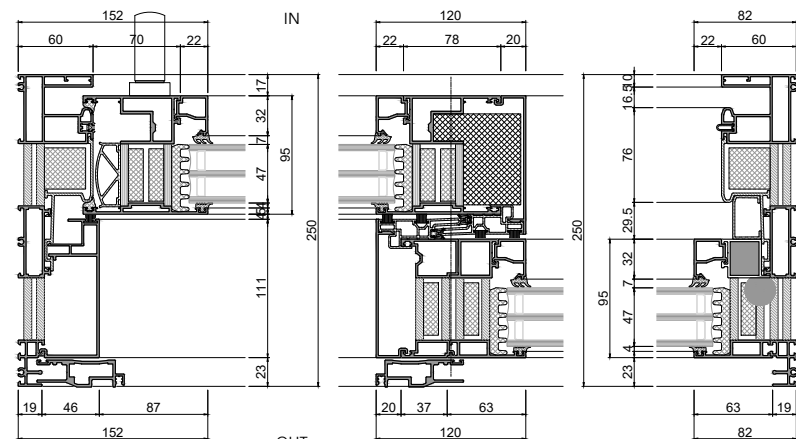
(주)이건창호
안전관리부 이주영 91 (도화용)
T 1522-1271 F (032) 760 0697



VERTICAL SECTION (B-B')



VERTICAL SECTION (A-A')



VERTICAL SECTION (C-C')

자세한 제품 설명이나 추가적으로 자료가 필요하신 분은 이견창호 설계영업팀 담당자에게 문의 바랍니다.